

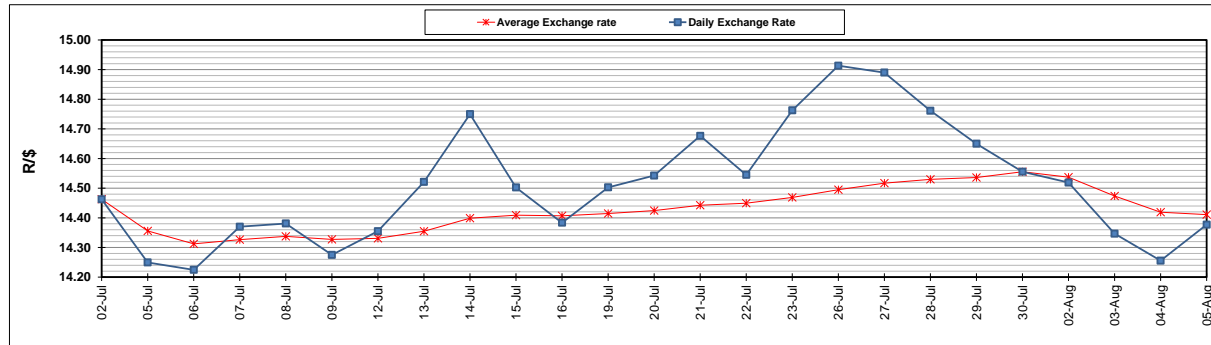
	PETROL 95 ULP	PETROL 93 ULP & LRP	DIESEL 0.05%	DIESEL 0.005%	ILL. PAR.
GAUTENG PUMP PRICE (SA c/l) AS FROM 04/08/2021	1,830.000	1,811.000	-	-	-
WHOLESALE PRICE (SA c/l) AS FROM 04/08/2021	-	-	1,564.200	1,566.600	963.488
SINGLE NATIONAL MAXIMUM RETAIL PRICE	-	-	-	-	1,217.000
BASIC FUEL PRICE - 05/08/2021 (SA c/l)	794.145	781.930	726.274	729.070	710.781
PRESS RELEASE CONTRIBUTION TO BFP 04/08/2021 - 05/08/2021 (SA c/l)	827.590	818.590	770.630	773.030	750.128
UNIT OVER/(UNDER) RECOVERY - 05/08/2021 (SA c/l)	33.445	36.660	44.356	43.960	39.347
AVERAGE BASIC FUEL PRICE 30/07/2021 - 05/08/2021	813.516	800.424	749.926	752.736	734.169
AVERAGE UNIT OVER/(UNDER) RECOVERY 30/07/2021 - 05/08/2021	(36.578)	(32.486)	(8.696)	(8.506)	(14.041)

ANALYSIS MOVEMENT OF AVERAGE OVER/(UNDER) RECOVERY

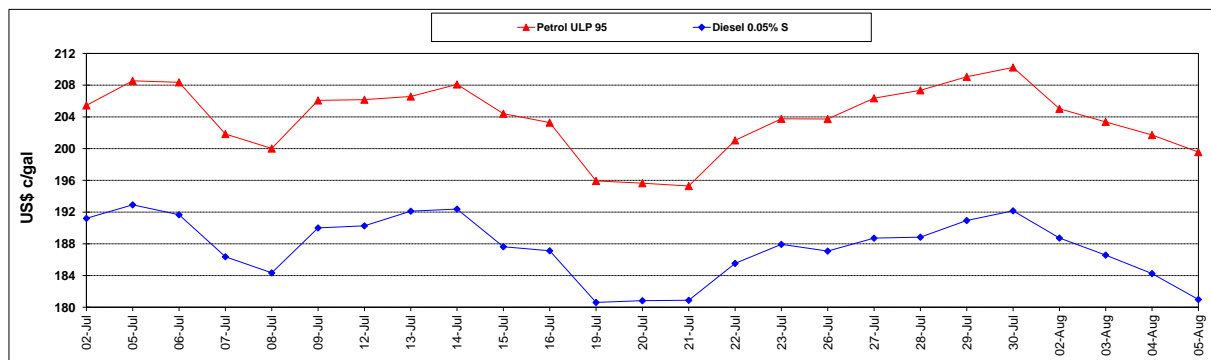
	PETROL 95	PETROL 93	DIESEL 0.05%	DIESEL 0.005%	ILL. PAR.
- MOVEMENT IN INTERNATIONAL PRODUCT PRICES	(43.646)	(39.440)	(15.211)	(15.046)	(20.419)
- MOVEMENT IN EXCHANGE RATE	7.068	6.954	6.515	6.540	6.378
AVERAGE UNIT OVER/(UNDER) RECOVERY 30/07/2021 - 05/08/2021	(36.578)	(32.486)	(8.696)	(8.506)	(14.041)

R/\$ EXCHANGE RATE - (R/\$14.3770- 05/08/2021)

EXCHANGE RATE USED IN BASIC FUEL PRICE



INTERNATIONAL PRODUCT PRICES OF BASKET USED IN BASIC FUEL PRICE



BASIC FUEL PRICE IN SA CENTS PER LITRE

